

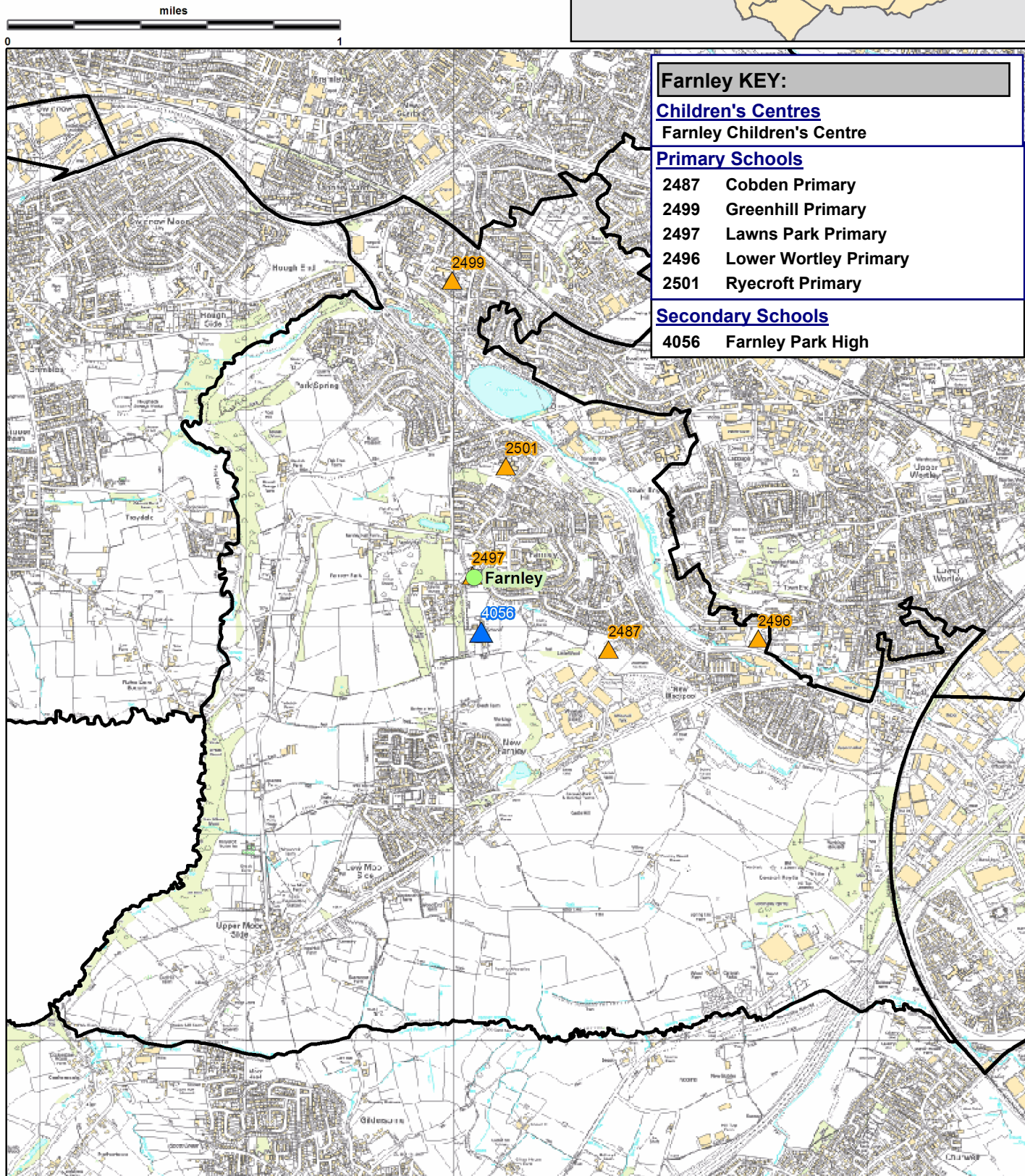
# Farnley

This report was produced by the Performance team on  
09/09/2011 telephone 0113 39 50701 or email  
educ.pmi@leeds.gov.uk

The information in these overviews is based on the cluster  
data profile V4.2

The map to the right gives the position of the cluster in Leeds.

The map below shows the cluster in greater detail, highlighting  
the location of the Children's Centres, Primary and Secondary  
Schools in the cluster.



Cluster Overview

Data Source: January School Census					Source Data: Children's Services	
Primary Schools		Total numbers on roll			Children's Centre	Ofsted ID
DfE		2009	2010	2011	Farnley Children's Centre	
2487	Cobden Primary	189	201	221		
2499	Greenhill Primary	346	328	336		
2497	Lawns Park Primary	249	254	248		
2496	Lower Wortley Primary	338	337	348		
2501	Ryecroft Primary	137	134	128		
Total		1259	1254	1281		
Secondary Schools						
4056	Farnley Park High	829	826	808		
Total		829	826	808		

Data Source: The Office of National Statistics mid-year population estimates								
Population Estimates	0-15			Working Age			Over 60/65+	
Number of people by age group/year:	07	08	09	07	08	09	07	08
Cluster	3188	3146	3169	10293	10544	10782	2571	2598
Area	44285	44108	44366	206614	207876	208717	46759	47163
Leeds All	133181	132741	133396	510581	516578	522769	128416	129937

Data Source: NHS Leeds												
Under fives	September 2009						September 2010					
Number of infants by age group:	0-1	1-2	2-3	3-4	4-5	Total	0-1	1-2	2-3	3-4	4-5	Total
Cluster	242	245	230	192	213	1125	263	235	245	227	197	1167
Area	3241	2999	3023	2814	2818	14895	3318	3278	3014	3023	2870	15503
Leeds All	9658	9468	9060	8891	8657	45728	10202	9848	9478	9195	9113	47836

Data Source: January school census										
KEY: Free School Meals (FSM), Special Educational Needs (SEN) and English as an additional Language (EAL)										
Percentage of pupils who are:		FSM eligible			SEN (All)			EAL		
		09	10	11	09	10	11	09	10	11
<b>Primary</b>										
Cluster	School	25.6	26.7	29.8	23.2	18.7	18.3	2.9	2.3	3.1
Cluster	Residence	23.4	25.6	28.2	22.4	19.0	17.9	4.1	3.9	4.6
Area	School	17.0	18.7	19.7	15.8	15.1	15.3	12.8	13.3	14.0
Total Primary	School	19.9	21.5	22.2	17.7	17.8	17.8	15.2	15.8	16.5
<b>Secondary</b>										
Cluster	School	19.4	21.6	20.2	7.7	10.9	21.4	1.6	1.8	2.7
Cluster	Residence	20.8	22.4	22.6	16.9	19.8	23.8	2.8	3.1	3.5
Area	School	15.0	16.0	16.3	18.2	19.2	17.8	9.2	9.6	9.8
Total Secondary	School	18.0	19.0	19.4	22.6	21.4	20.4	9.7	10.4	10.0
All pupils living in cluster	Residence	22.3	24.3	25.9	20.0	19.3	20.2	3.5	3.6	4.2
All pupils living in area	Residence	15.7	17.2	18.3	17.7	17.6	17.4	9.0	9.5	10.1
<b>Leeds All</b>		19.2	20.6	21.1	20.4	20.0	19.6	12.8	13.4	13.7

Data Source: HM Revenue and Customs										
Child Poverty	Number of Children (under 16) in families in receipt of CTC or IS/JSA			Number of Children (all ages) in families in receipt of CTC or IS/JSA			Number of children in poverty, by age of youngest child, 2008			
	2006	2007	2008	2006	2007	2008	0-4	5-10	11-15	16-19
Cluster	890	880	870	935	965	970	515	255	180	25
Area	7760	8010	7990	8495	8935	8950	4630	2530	1415	305
Leeds All	29185	30235	29700	31750	33690	33300	17625	9195	5055	1160



Data Source: January School Census and 2010 Index of Multiple Deprivation											
IMD	Percentage of pupils resident in most deprived areas		3% IMD			10% IMD			20% IMD		
			09	10	11	09	10	11	09	10	11
Primary											
Cluster	School		0.1	0.1	0.5	26.1	24.9	34.2	44.6	44.1	55.5
Cluster	Residence		0.0	0.0	0.0	18.9	19.7	30.7	41.2	41.2	52.4
Area	School		1.5	1.5	2.8	15.6	15.6	15.0	26.7	26.8	27.6
Total Primary	School		8.1	8.2	8.4	28.1	28.1	27.1	36.5	36.6	37.6
Secondary											
Cluster	School		0.0	0.1	0.6	24.2	23.0	30.2	40.8	40.2	48.5
Cluster	Residence		0.0	0.0	0.0	24.2	23.3	32.6	46.2	45.7	53.6
Area	School		2.9	2.6	3.1	15.8	15.0	14.2	25.4	24.6	25.0
Total Secondary	School		7.1	7.0	7.5	24.3	24.0	23.5	32.7	32.3	33.5
All pupils living in cluster	Residence		0.0	0.0	0.0	21.2	21.2	31.5	43.4	43.0	52.9
All pupils living in area	Residence		0.0	0.0	1.5	10.7	10.5	10.6	22.0	21.9	23.2
Leeds All			7.7	7.7	8.0	26.5	26.4	25.7	35.0	34.8	35.9

Data Source: January School Census and CACI ACORN												
KEY: Wealthy Achievers (WA), Urban Prosperity (UP), Comfortably Off (CO), Moderate Means (MM), Hard Pressed (HP)												
ACORN			2010					2011				
percentage of pupils in each acorn category:			WA	UP	CO	MM	HP	WA	UP	CO	MM	HP
Primary												
Cluster	School		5.7	0.3	26.7	16.7	49.4	7.1	1.2	24.4	16.5	50.1
Cluster	Residence		7.5	0.1	31.1	13.7	44.7	10.1	0.9	27.9	13.4	44.9
Area	School		13.7	8.1	31.6	13.8	31.4	14.6	8.0	31.3	13.0	32.3
Total Primary	School		14.9	6.2	27.1	16.1	34.4	15.4	5.9	27.8	15.8	34.3
Secondary												
Cluster	School		6.5	0.7	30.6	18.4	42.7	7.4	1.2	29.3	16.6	45.4
Cluster	Residence		7.2	0.4	33.7	12.9	44.9	9.3	0.4	29.8	13.4	46.3
Area	School		17.1	7.7	32.5	13.5	28.3	18.4	7.0	32.6	12.6	28.8
Total Secondary	School		16.2	5.8	29.3	14.9	32.9	17.1	5.2	29.7	14.7	32.5
All pupils living in cluster	Residence		7.4	0.2	32.2	13.3	44.8	9.8	0.7	28.6	13.4	45.4
All pupils living in area	Residence		14.5	7.5	34.0	12.5	30.7	15.5	7.4	33.5	11.9	31.4
Leeds All			15.4	6.0	28.0	15.6	33.9	16.1	5.6	28.5	15.4	33.6

Data Source: DWP Information Directorate												
KEY: Job Seekers Allowance (JSA), Incapacity Benefit (IB), Lone Parent Benefit (LPB), Total Out of Work (TOW)												
Unemployment	2007				2008				2009			
Percentage of working age people in receipt of:	JSA	IB	LPB	TOW	JSA	IB	LPB	TOW	JSA	IB	LPB	TOW
Cluster	3.2	7.7	3.0	14.4	3.4	7.5	2.8	14.2	5.9	7.2	2.9	16.6
Area	1.9	4.9	1.3	8.2	2.1	4.8	1.3	8.4	3.5	4.7	1.2	9.8
Leeds All	2.6	6.2	1.9	11.0	2.7	6.0	1.9	11.0	4.4	5.9	1.8	12.6

Data Source: Axiom Lifestyle Survey 2010										
Cluster	% Property Type						% Length of residence			
	Owned	Rented - Council		Rented - Private		Less than 1 year	2-5 years	More than 5 years		
	57.8	32.3		9.8		6.3	24.5	69.2		
	62.8	21.6		15.6		9.4	18.1	72.5		
Area	61.6	23.9		14.6		7.1	17.5	75.4		
Leeds All										
Cluster	% Income						% Struggling			
	<10k	10-20k	20-30k	30-40k	40-50k	50k+	Food	Mortgage	Bills	
	17.0	25.4	14.2	18.0	12.6	12.9	11.8	1.6	12.8	
	17.1	20.3	15.7	16.7	11.1	19.1	11.1	2.0	12.6	
Area	18.3	20.0	14.7	17.6	13.2	16.2	10.8	2.2	13.0	
Leeds All										
Cluster	% of Households with 1 or more people that have:						% Car ownership			
	no qualifications			degree or higher qualification			No car	1 car	2+ cars	
	7.2			12.8			27.2	43.0	29.8	
	5.8			25.4			28.0	40.8	31.2	
Area	6.2			23.3			28.3	42.5	29.2	
Leeds All										

## Being Healthy

Data Source: NHS Leeds									
Maternity and teenage conception	Number and Rate of conception per 1000 15-17 year olds June 08 - June 09		% Women receiving a health and social care needs assessment at 12 weeks as a percentage of live births in the same year		% initiating breastfeeding		% breastfeeding at 6 weeks		
	Number	Rate	Jan-Dec 2009	Jan-Nov 2010	Apr 09 Mar 10	Apr 10 Jan 11	Apr 09 Mar 10	Apr 10 Jan 11	
Cluster	17	49.9	81.8	84.8	55.6	49.7	28.6	22.6	
Area			83.7	85.9	71.6	65.8	43.1	35.1	
Leeds All		49.8	81.3	82.8	69.6	63.3	41.3	35.0	
Birth Data									
3 year rolling average of births below 2.5kg			05-07	06-08	07-09				
Cluster			8.5	10.1	11.6				
Leeds All			7.9	7.8	7.8				
Emergency Hospital Admissions		Number of Emergency Admissions by age group 2005-2009			Number of emergency admissions to hospital for injury, poisoning and certain other consequences of external causes by age group 2005-09				
		0-4	5-10	11-18	0-4	5-10	11-18		
Cluster		654	191	518	86	62	229		
Leeds All		25499	7966	19445	3113	2478	7249		
Immunisations		% of 2 year olds receiving vaccinations in quarter 3 for:				% of 5 year olds receiving vaccinations in quarter 3 for:			
		<u>Diphtheria</u>		<u>MMR</u>		<u>Diphtheria</u>		<u>MMR</u>	
		09-10	10-11	09-10	10-11	09-10	10-11	09-10	10-11
Cluster		98.3	98.2	89.8	91.1	95.5	91.2	95.5	88.2
Area		96.9	96.8	87.6	90.5	95.0	93.4	93.1	89.8
Leeds All		96.2	96.2	86.1	88.1	94.9	94.0	90.9	91.4

## Make a positive Contribution

Data Source: West Yorkshire Police									
Property Crime		Burglary		Burglary		Criminal		Vehicle	
Number of recorded Crimes for:		Dwelling		Elsewhere		Damage		Robbery	
		09	10	09	10	09	10	09	10
Cluster		217	209	132	112	417	334	23	17
Area		4156		2127		4299		379	
Leeds All		9086	9508	5901	5681	15671	13599	1305	1297

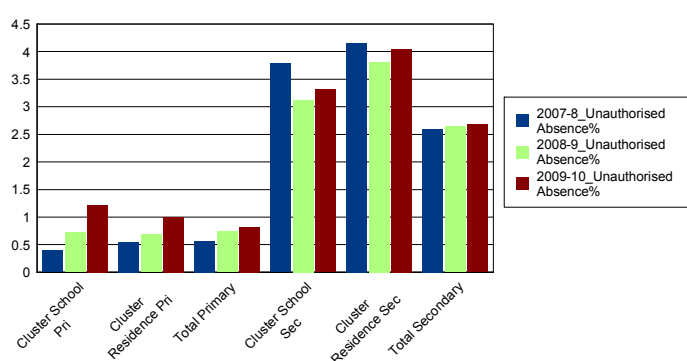
Personal Crime		Drug Offences		Theft from person		Violent Crime	
Number of recorded Crimes for:		09	10	09	10	09	10
Cluster		40		6		280	217
Area		187		290		2966	
Leeds All		2537	1248	1537	2235	12748	11233

Data Source: Youth Offending Service								
Number of offenders and offences 2008-10								
	Number of Offenders	07-08	08-09	09-10	Number of Offences	07-08	08-09	09-10
Cluster		67	50	27		183	131	56
Leeds All		2741	2166	1522		6331	4883	3134

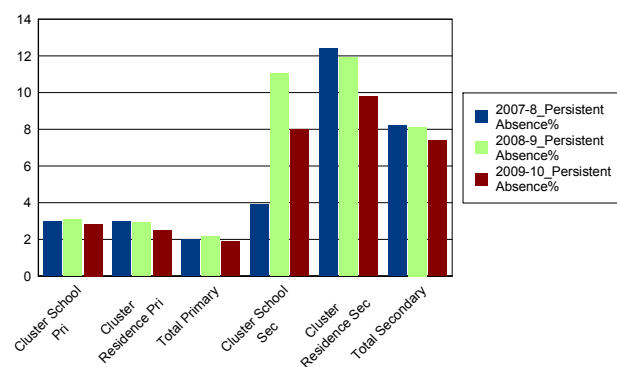
April 2009 - March 2010 number of offences by young offenders									
	Burglary	Breaches	Criminal Damage	Drugs	Motoring and Vehicle	Other	Public Order	Theft and handling	Violence against the person
Cluster	<5	6	7	<5	14	<5	5	14	<5
Leeds All	282	301	333	155	230	328	314	626	565

Data Source: School Census												
Attendance and Persistent Absence by percentage	Attendance			Authorised Absence			Unauthorised Absence			Persistent Absence		
	07-08	08-09	09-10	07-08	08-09	09-10	07-08	08-09	09-10	07-08	08-09	09-10
Primary												
Cluster School	93.4	93.7	93.5	6.2	5.6	5.3	0.4	0.7	1.2	3.0	3.1	2.8
Cluster Residence	93.6	93.8	93.8	5.8	5.5	5.2	0.6	0.7	1.0	3.0	2.9	2.5
Total Primary	94.7	94.3	94.4	4.8	5.0	4.7	0.6	0.7	0.8	2.0	2.2	1.9
Secondary												
Cluster School	90.3	90.9	90.9	5.9	6.0	5.8	3.8	3.1	3.3	3.9	11.0	8.0
Cluster Residence	89.3	90.0	90.2	6.5	6.2	5.8	4.2	3.8	4.0	12.4	11.9	9.8
Total Secondary	91.4	91.5	91.6	6.0	5.9	5.7	2.6	2.6	2.7	8.2	8.1	7.4

Percentage Unauthorised Absence



Percentage Persistent Absence



Data Source: Children's Services												
Exclusions	Fixed Term Exclusions						Permanent Exclusions					
	Number			Rate per thousand			Number			Rate per thousand		
	07-08	08-09	09-10	07-08	08-09	09-10	07-08	08-09	09-10	07-08	08-09	09-10
Primary												
Cluster School	16	22	6	12.3	17.5	4.8	0	0	0	0.0	0.0	0.0
Cluster Residence	9	10	6	6.3	6.7	3.9	0	0	0	0.0	0.0	0.0
Total Primary	447	467	367	7.4	7.7	6.0	1	2	2	0.0	0.0	0.0
Secondary												
Cluster School	202	212	136	243.7	255.7	164.6	1	2	1	1.2	2.4	1.2
Cluster Residence	241	171	136	221.9	163.0	138.6	2	2	2	1.8	1.9	2.0
Total Secondary	5063	4351	4277	110.2	93.6	92.9	60	52	57	1.3	1.1	1.2

## Achieve Economic Well Being

**KEY:** Not in Employment, Education or Training(NEET), In Employment, Education or Training(EET), In Full time Education (FE)

**Data Source:** November destination survey

NEET/FE		Number of NEET			% NEET			Number of FE			% FE		
		2008	2009	2010	2008	2009	2010	2008	2009	2010	2008	2009	2010
<b>Cluster</b>													
School	Year 11	7	14	<5	4.5	9.3	<5	134	111	121	87.0	73.5	84.0
	Year 12	<5	5	<5	<5	9.1	<5	35	38	30	89.7	69.1	93.8
	Year 13	<5	<5	<5	<5	<5	<5	30	11	18	90.9	50.0	54.5
Residence	Year 11	25	29	17	10.9	13.1	8.3	169	157	166	73.8	71.0	81.0
	Year 12	<5	8	<5	<5	10.5	<5	48	55	59	88.9	72.4	89.4
	Year 13	<5	<5	<5	<5	<5	<5	31	21	30	81.6	67.7	62.5
<b>Leeds All</b>													
	Year 11	705	646	393	8.3	7.7	4.8	6678	6703	7194	78.4	79.7	87.3
	Year 12	162	132	67	4.7	3.5	1.8	3098	3436	3476	89.3	89.9	93.3
	Year 13	79	121	135	3.3	4.5	4.3	1969	2067	2350	83.4	77.6	75.6

**Data Source:** Integrated Youth Support Service

16-18 Neet and EET November 2010-January 2011		NEET		EET		Not Known		Other Activity	
		Number	%	Number	%	Number	%	Number	%
Cluster		62	12	466	87	<5	<5	<5	<5
Leeds All		1783	8	20207	88	561	2	320	1.4

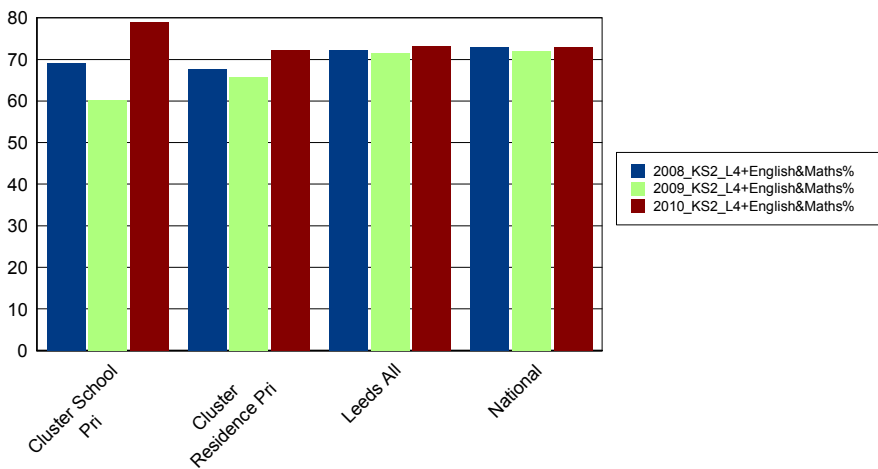
**Please Note:** Leeds totals for 16-18 NEET will not match publicised totals as published totals include a proportion of those whose status has expired

## Enjoy and Achieve

Data Source: Keypas and DFE performance tables															
Foundation Stage Profile Data		The percentage of pupils achieving a Good Level of Development (78+ points overall and 6+ points in all PSE and CLL strands)													
		2008			2009			2010							
Cluster	School	41			60			49							
Cluster	Residence	44			53			50							
Leeds All		47			51			53							

KS2 Data		English 4+			English 5+			Maths 4+			Maths 5+			English and Maths 4+		
		08	09	10	08	09	10	08	09	10	08	09	10	08	09	10
Cluster	School	81.2	74.2	81.7	27.9	25.8	33.1	70.9	65.6	86.6	24.2	20.2	26.8	69.1	60.1	78.9
Cluster	Residence	78.8	76.4	76.5	24.0	22.5	28.4	71.5	71.3	80.2	27.9	25.3	24.7	67.6	65.7	72.2
Area	School	83.1	82.6	82.5	33.0	32.1	34.4	79.7	80.0	81.8	32.6	33.5	33.5	74.8	74.6	76.5
Area	Residence	83.0	82.5	82.1	33.9	32.8	35.2	80.1	80.2	81.5	33.5	34.1	34.5	75.1	74.8	76.4
Leeds All		80.9	79.1	79.3	29.6	28.2	30.6	77.5	77.2	79.0	30.0	32.6	31.2	72.2	71.6	73.2
National		81.0	80.0	73.0	30.0	29.0	33.0	79.0	79.0	79.0	31.0	35.0	34.0	73.0	72.0	73.0

% English and Maths Level 4+



Data Source: EPAS and DFE performance tables																
KS4 Data		% of 5+ A*-C GCSE			% of 5+ A*-C inc EM GCSE			% of 5+ A*-G GCSE			% of 1+ A*-G GCSE			% no GCSE Passes		
		08	09	10	08	09	10	08	09	10	08	09	10	08	09	10
Cluster	School	48.0	45.7	77.9	30.0	32.5	44.8	89.0	86.8	95.2	99.0	96.7	98.6	1.0	3.3	1.4
Cluster	Residence		57.0	70.0		31.8	38.0		88.8	91.5		97.2	98.0		2.8	1.5
Area	School	64.4	68.1	74.5	49.5	47.5	53.1	92.2	92.1	94.1	98.3	98.5	98.8	1.7	1.5	1.1
Area	Residence		67.7	74.3		47.4	52.6		91.3	93.0		97.9	97.9		2.1	1.6
Leeds All		62.5	67.5	76.5	46.4	45.9	50.6	90.6	91.3	93.7	97.7	97.7	98.0	1.9	2.3	1.6
National		65.3	70.0	75.4	47.6	49.8	53.5	91.6	92.3	92.9	98.6	98.9	99.1	1.4	1.1	0.9

% 5+ A\*-C inc English and Maths GCSE

